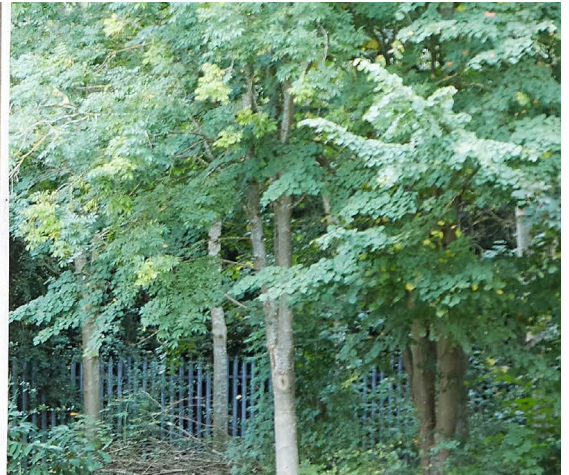


# Koto.

| Pterygota macrocarpa |



All images used are for representation purposes only.



## Koto.

This timber is an excellent choice for mouldings as it machines very cleanly and easily and rarely tears out. The colour is a pale creamy yellow. Koto veneered doors were widely used in public buildings in the 1970s-1990s.

For more information please visit: [www.sykestimber.co.uk](http://www.sykestimber.co.uk)

<b>Origin.</b> West Africa.	<b>Density.</b> 630kgs/m <sup>3</sup>
<b>Availability.</b> Square edged kiln dried boards.	<b>Movement in Service.</b> Medium.
<b>Grade.</b> 'Sykes Grade' upgraded from FAS.	<b>Thicknesses available.</b> 26mm, 38mm, 52mm
<b>Colour.</b> Creamy Yellow.	<b>Length and width specification.</b> 1.8m and longer x 100mm and wider.
<b>Applications.</b> General mouldings, internal doors.	<b>Basic price Level.</b> Low.
<b>Durability.</b> Non-durable.	<b>Summary.</b> Excellent clean timber for mouldings, a good alternative to Ramin.