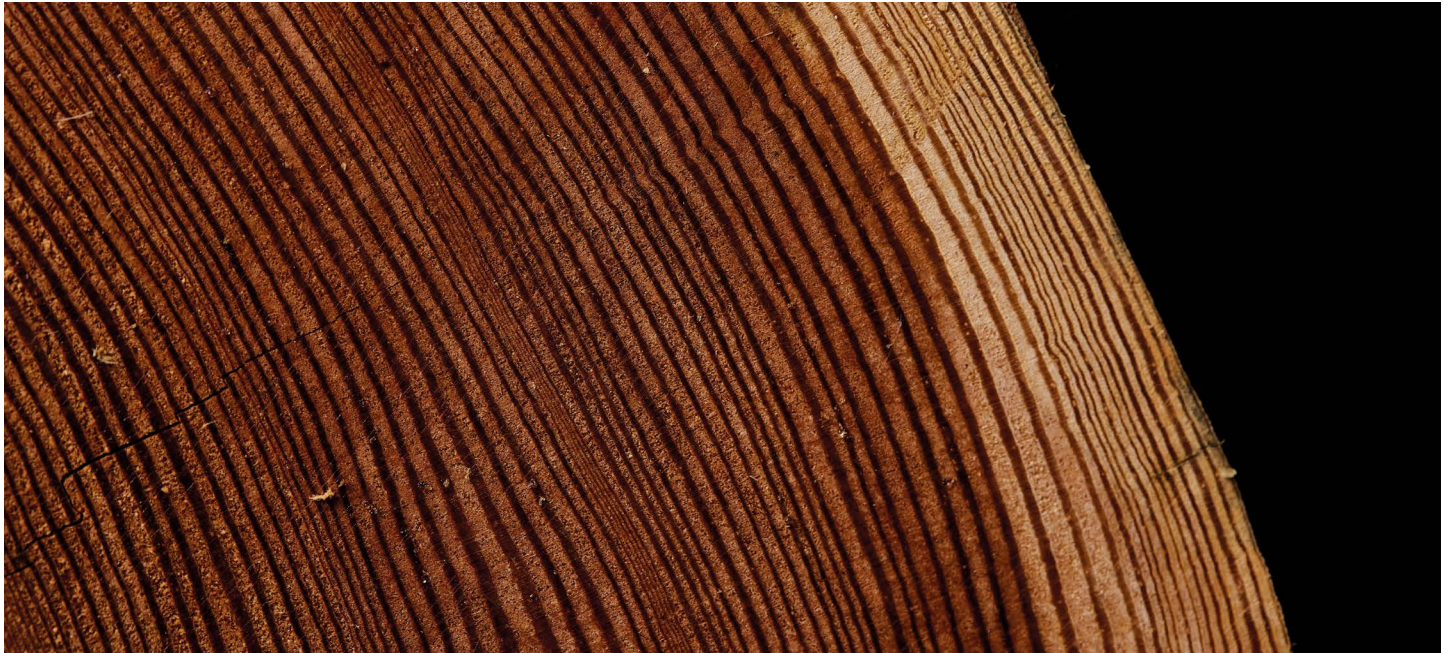


Specialist Softwoods.

Please ask us about the availability of the following speciality softwoods.



All images used are for representation purposes only.



Canadian Red Pine | *Pinus resinosa* |

A stable and even textured Pine, which works easily, making it suitable for internal joinery or furniture. It is sometimes called Norway Pine although it is actually a native Canadian timber. Sykes Timber have used the same Canadian supplier for over a Century! We stock this in 'Selects' grade, virtually clear square-edged boards. The heartwood is light reddish-brown and sapwood pale yellow to cream.



Yew | *Taxus baccata* |

A tree associated with Churchyards and Longbows, Yew is the longest living tree in the UK, with many examples well over one thousand years old. The timber is very slow-grown, dense and hard for a softwood. The heartwood is orangy-red with pale yellow sawwood.

It has great strength but also great flexibility, which is why it was the timber of choice for longbows. Other uses include Furniture and Turnery. All parts of the tree are toxic, so is unsuitable for food-use related woodware.